



RICE GROWING OUTLOOK REPORT

December 2024





Rice Growing Outlook Report

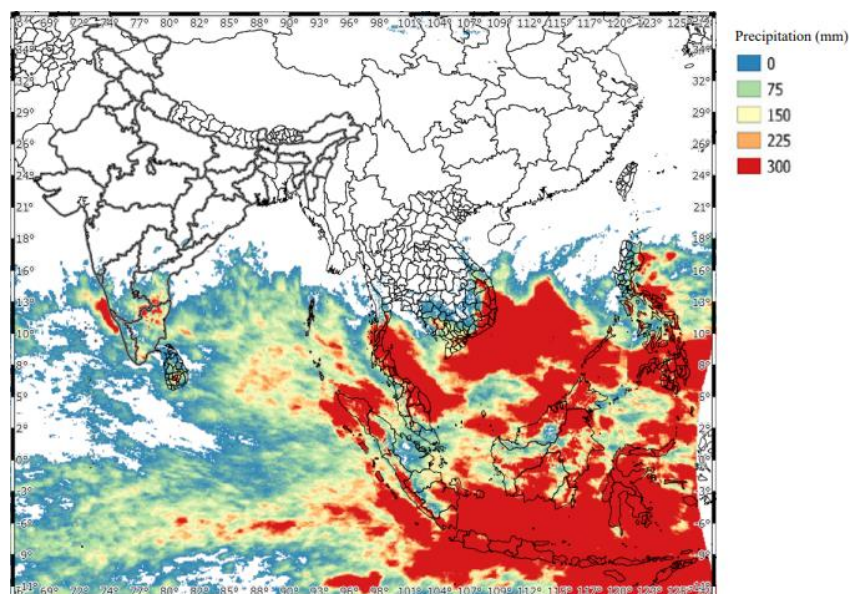
December, 2024

Overview

In the Northern side of SE-Asia, the harvesting of wet season rice has almost completed in all countries and regions. This season's weather was affected by heavy rains from typhoons in the latter half of the growing season. Generally, the final production was fair to slightly good, but North Luzon in Philippines was poor due to strong winds and flooding brought by typhoons, and affected by the infestation of pests during reproductive stage. The dry season rice is in seeding stage to early growing stage under favorable growing conditions.

In the southern side of SE-Asia, the harvesting of dry season rice will be completed this December. The production conditions are mixed by country; Indonesia is expected to be slightly good due to sufficient irrigation during the growing season. While, Malaysia is expected to decline slightly due to the impact of recent flooding. On the other hand, the progress of wet season rice planting is generally at the same level as in normal years.

Precipitation condition in early of December



This map is provided by Indian Space Research Organisation (ISRO) under the APRSAF/SAFE agromet project

<https://www.eorc.jaxa.jp/SAFE/project/agromet>

Brunei

The wet season paddy planting is almost completed in both irrigated and rainfed areas, mostly in tillering to panicle forming stage. It is currently experiencing heavy rainfall with flash floods in certain areas of the country. Although there are concerns about the impact on some fields, current outlook of rice crop remains fair.

Cambodia

The planted area of dry season rice reached around 81% of the national plan (533 thousand hectares). The growing of dry season is in tillering to young panicle forming stage under good condition. The weather condition is good due to the enough irrigation water from rain, despite the dry season and sunshine.

Indonesia

The dry season rice harvest will be completed this December. So far, the total dry season rice harvest area is 4.5 million hectares, which is 10.1% lower than last year. Yield conditions are expected to be better than last dry season due to sufficient sunshine during the growing season.

This December is the third month of wet season rice planting. The Planting of wet season rice totaled 2.7 million hectares. The Planting progress is still in line with the previous year's average and it is steadily expanding due to the intensive rainfall from late November to mid-December. The rainfall area is gradually expanding causing flooding in several places but did not cause significant damage to rice growing.

Laos

The wet season of lowland rice is at the end of harvesting stage and under the good condition. The final harvested area is estimated to be around 751 thousand hectares. The yield is 4.23 ton/ha and the total production is expected to be 3.1 million tons.

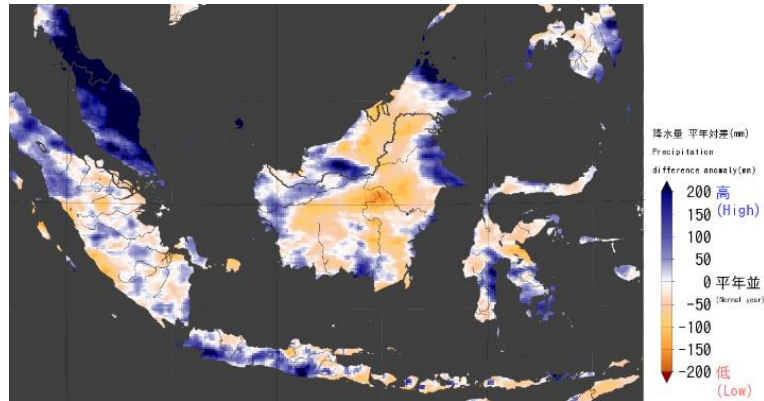
On the other hand, the harvesting of upland rice is nearly completed. The harvested area is around 69 thousand hectares, and the final production is forecasted 145 thousand tons, which is a decrease from last year.

The national planting plan of dry season rice in 2024-2025 is approximately around 100 thousand ha.

Malaysia

The harvesting of dry-season rice has been completed with an estimated yield 3.5 tons per hectare. However, the overall rice production is expected to decline slightly due to the impact of recent flooding in the northern and northeastern states of Peninsular Malaysia.

As of December, for the progress of wet-season rice planting stands at approximately 56% of the total cultivated area, and it slightly delays compared to the same period last year due to irregular rainfall patterns.



JASMAI late November Precipitation anomaly map : the impact of recent flooding in the northern and northeastern states of Peninsular

Myanmar

Harvesting wet season rice reached 3.2 million hectares accounting for over 50% of the planted area of 6.0 million hectares. Progress of the harvesting work is slightly slower than last year. It produced 13.7 million tons of paddy with a yield 4.26 tons per hectare. The yield is good and similar to last year. The current weather is not interrupting the harvesting work progress. All harvesting is expected to be completed by the end of this month.

For dry season rice, the national plan is set as 1.13 million hectares country-wide. Over 100 thousand hectares of the dry season rice has been planted mainly in the delta areas. Planting work progress is slightly faster than last year. It is suggested that the current weather may favor the planting of the dry season rice.

Philippines

Wet season rice planted during the July to August period was fully harvested. Production was about 7.28 million metric tons with a yield of 4.2 tons per ha. The yield condition in North Luzon, where is the main rice production area was poor due to strong winds and flooding brought by typhoons, and affected by the infestation of pests during reproductive stage.

On the other hand, dry season rice planted in November – December is in seeding stage. During this month, the country experienced near normal to above normal rainfall conditions.

Thailand

The harvesting of wet season rice has been completed covering 9.6 million hectares with a total production is approximately 27 million tons. It is slightly increased due to the good growing conditions and improved care by farmers for their crops.

The dry season rice is in the sowing period. The planted area is forecasted to increase compared to last year. The growing conditions are good due to sufficient irrigation water and natural water for cultivation.

Vietnam

In North, the harvesting of wet season rice is completed. The final yield is slightly poor due to the Yagi storm's impact. The dry season rice has not started yet because this month is in the sowing time of winter season crops, such as maize, potatoes, sweet potatoes, peanuts, and vegetables.

In the South, the other wet season rice (autumn-winter rice and seasonal rice) is still in the harvesting stage. The harvested area reached 0.68 million hectares out of 1.26 million hectares planted. The yield forecasts higher than last year due to warm weather and better irrigation preparation. On the other hand, the dry season rice (winter-spring rice) is in the sowing stage. The current sown area is 0.71 million ha, mainly the Mekong River Delta. The growing condition is well under stable weather conditions.

*JASMAI is an open and free system

<https://jasmai.maff.go.jp/en/>